

IMPORTANT NOTES:

THE INFORMATION GIVEN ON THIS FLUE FAN INSTALLATION ADVICE SHEET IS CRUCIAL TO THE SUCCESSFUL WIRING AND COMMISSIONING OF YOUR FLUE FAN SYSTEM.

THE PREPARATORY WORKS AND BASIC WIRING REQUIREMENTS OUTLINED HERE MUST BE IN PLACE BEFORE OUR INSTALLATION ENGINEERS AND GAS / ELECTRICAL ENGINEERS ARRIVE ON SITE TO CARRY OUT THE FINAL WIRING AND COMMISSIONING.

THE INSTALLATION WILL TYPICALLY BE TWO PHASE AS FOLLOWS...

PHASE 1:
INSTALLATION ENGINEERS FIT FLUE FAN, FLUE AND ASSOCIATED ANCILLIARIES.

PHASE 2:
ELECTRICAL ENGINEER & CORGI REGISTERED GAS ENGINEER ARRIVE (NOT NECESSARILY AT THE SAME TIME) TO CARRY OUT WIRING AND TEST OF ELECTRICAL CONTROLS, FAN AND SWITCHES AND TO INTERLOCK FAN CONTROL WITH GAS FEED BEFORE FINAL COMMISSION AND HANDOVER.

MEANS OF ACCESS TO THE FAN INSTALLATION POSITION MUST BE SAFE AND MUST REMAIN IN PLACE UNTIL FINAL COMMISSION AND HANDOVER.

PERMANENT POWER AND GAS SUPPLY MUST BE IN PLACE AND AVAILABLE AS OUTLINED ON THIS ADVICE SHEET FOR WIRING AND COMMISSIONING TO TAKE PLACE.

UNLESS OTHERWISE STATED ANY QUOTATION IS FOR A SINGLE VISIT TO CARRY OUT THE PHASE 2 COMMISSIONING WORK. UNFORTUNATELY IF THIS VISIT IS ABORTED DUE TO ANY OUTSTANDING PREPARATORY WORK OR REQUIREMENTS SUCH AS LACK OF SAFE ACCESS OR LACK OF A SUITABLE LOCAL POWER OR GAS SUPPLY WE WOULD HAVE TO MAKE AN ADDITIONAL CHARGE TO COVER THE COST OF A RETURN VISIT OR RECEIVE A SIGNED VARIATION ORDER TO CARRY OUT ADDITIONAL WIRING FOR EXAMPLE WHERE THIS IS POSSIBLE.

WE DO NOT CARRY OUT ANY CABLE / CONDUIT CHASING OR BACK BOX FITTING FOR FLUSH MOUNTING OR OTHER BUILDERS WORK UNLESS WE HAVE SPECIFICALLY QUOTED TO DO SO. ANY CONDUIT FITTED IN PREPARATION FOR OUR PHASE TWO WIRING AND COMMISSIONING VISIT MUST HAVE DRAW STRING PRE-FITTED.

PLEASE NOTE:
A GAS SUPPLY FEED MUST BE IN PLACE BEFORE OUR ENGINEER ARRIVES TO FIT A SOLENOID INTO THE GAS FEED.
THERE MUST BE A LOCAL GAS FEED SHUT OFF VALVE IN PLACE SO THAT OUR ENGINEER CAN ISOLATE THE GAS PIPE FROM THE MAIN SUPPLY BEFORE FITTING OUR SOLENOID VALVE AND INTERLOCK WITH THE EFC21 CONTROL.

230V 50Hz 13A FUSED SPUR & EXTERNAL SWITCH MAINS SUPPLY.

LOCAL GAS SHUT OFF VALVE.

EFC21 CONTROL

7 CORE CABLE.

7 CORE CABLE.

BY OTHERS.

BY OTHERS.

PLEASE NOTE:
A GAS SOLENOID VALVE (1/4" OR 1/2" STANDARD) IS TO BE SUPPLIED AND FITTED INTO THE GAS SUPPLY (USUALLY BY US). THIS PROVIDES AN INTERLOCK TO THE EFC21 CONTROL SO THAT IF THERE IS A POWER SUPPLY FAILURE FOR EXAMPLE, THE SOLENOID WILL SHUT OFF THE GAS SUPPLY TO THE GAS BURNER APPLIANCE. THIS MUST BE FITTED BY A CORGI REGISTERED ENGINEER.

IF OUR ENGINEER IS FITTING THIS SOLENOID FOR COMMISSIONING PURPOSES THEN THE APPLIANCE AND GAS SUPPLY MUST BE IN PLACE BEFORE THE DATE OF ATTENDANCE TO WIRE AND COMMISSION.

PLEASE NOTE:
IT IS ESSENTIAL THAT YOU CHECK THE DIAMETER OF YOUR GAS FEED PIPE AND ADVISE CHIMFLUE SO THAT WE CAN BE SURE TO SUPPLY A SUITABLE SOLENOID VALVE. PLEASE ALSO ADVISE WHETHER STEEL OR COPPER PIPE IS BEING USED.

PLEASE NOTE:
THE OVEN AND ASSOCIATED APPLIANCES MUST BE COMMISSIONED BY OTHERS. OUR ELECTRICAL / GAS ENGINEER WILL COMMISSION THE FLUE FAN SYSTEM AND CONTROLS PROVIDED THAT ALL REQUIREMENTS ARE IN PLACE AT THE TIME OF ATTENDANCE.

VENTILATION

PLEASE NOTE:

ADEQUATE VENTILATION MUST BE IN PLACE IN THE ROOM WHERE THE GAS APPLIANCE IS SITUATED TO ALLOW ADEQUATE AIRFLOW FOR SAFE OPERATION.
PLEASE CONSULT YOUR APPLIANCE MANUFACTURER'S HANDBOOK IF IN DOUBT. OUR CORGI COMMISSIONING ENGINEER WILL NOT BE ABLE TO COMMISSION UNLESS THE AIR VENTILATION IS ADEQUATE AND PERMANENTLY OPEN.

TYPICAL FAN MOUNTING ON EXTERNAL WALL.

ISOLATION SWITCH TO FIT HERE OR HERE.

ISOLATION SWITCH

THE 6 POLE IP RATED ISOLATOR SWITCH IS TO BE FITTED NEXT TO THE FAN LOCATION.

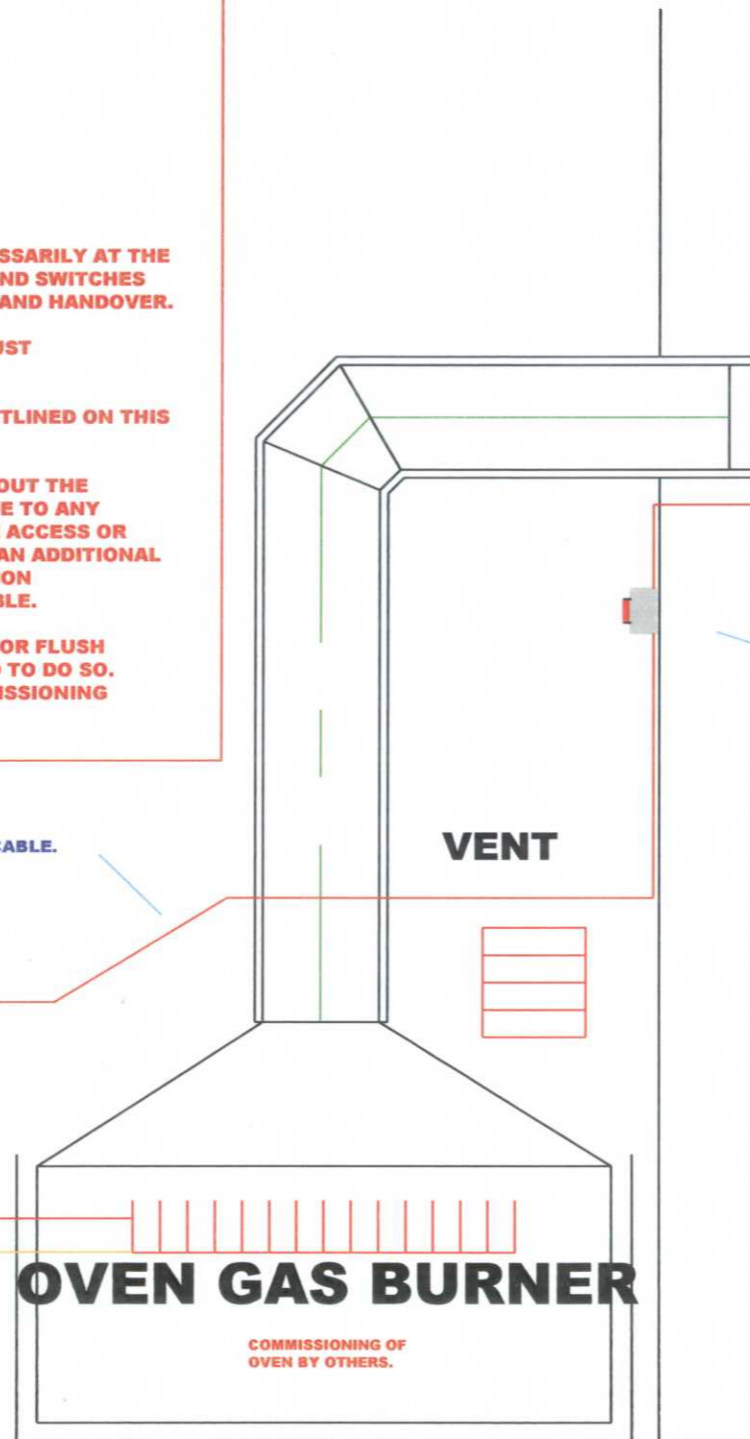
PLEASE NOTE:
IF OUR ENGINEER IS RUNNING THE CABLE FROM THE FAN ISOLATION SWITCH TO THE EFC21 CONTROL THEN THE ROUTE THROUGH THE BUILDING MUST BE AGREED WITH THE CHIMFLUE SALES ENGINEER AT THE TIME OF SITE SURVEY. ACCESS MUST BE SAFE AND ALL BUILDERS WORK SUCH AS HOLE CUTTING AND SUB-SURFACE CHASING MUST BE COMPLETE BEFORE OUR ELECTRICAL ENGINEER'S DUE DATE ON SITE.
IF THE AGREED ROUTE OR METHOD IS CHANGED THEN OUR CHIMFLUE LTD SALES ENGINEER MUST BE INFORMED SO THAT WE CAN QUOTE TO COVER THE COST OF RUNNING EXTRA CABLE OVER THE SPECIFIC DISTANCE INVOLVED.

THE EFC21 WILL BE SURFACE MOUNTED ON THE WALL. A SUITABLE BACK BOX CAN BE SUPPLIED TO BE FITTED BY OTHERS BEFORE OUR ELECTRICAL ENGINEER ARRIVES ON SITE.

THE EFC21 CONTROLLER REQUIRES A 230 VOLT 50Hz POWER SUPPLY WITH A 13A FUSED SPUR AND EXTERNAL SWITCH WITHIN A 3 METRE RADIUS OF THE CONTROLLER'S PROPOSED FITTING LOCATION.

THIS MUST BE IN PLACE PRIOR TO OUR WIRING AND COMMISSIONING DATE.

PLEASE NOTE:
IF THE DISTANCE TO THE 230V FUSED AND SWITCHED SPUR IS GREATER THAN THE ALLOWED FOR 3M THEN OUR CHIMFLUE LTD SALES ENGINEER MUST BE INFORMED SO THAT WE CAN QUOTE TO COVER THE COST OF RUNNING EXTRA CABLE OVER THE SPECIFIC DISTANCE INVOLVED.



ChimFlue Ltd

Unit 5, Viscount Court
South Way, Walworth Industrial Estate
Andover, Hampshire, SP10 5NW
Tel: 01264 332878
Fax: 01264 366647
Email: Sales@chimflue.co.uk
Client

AS QUOTATION

Drawing Title

**RSVG FAN
GAS OVEN**

Project

**WIRING/ACCESS
ADVICE SHEET**

Engineer	Date	Scale
Drawn PK	22.11.2007	NTS
Checked	Drawing No.	