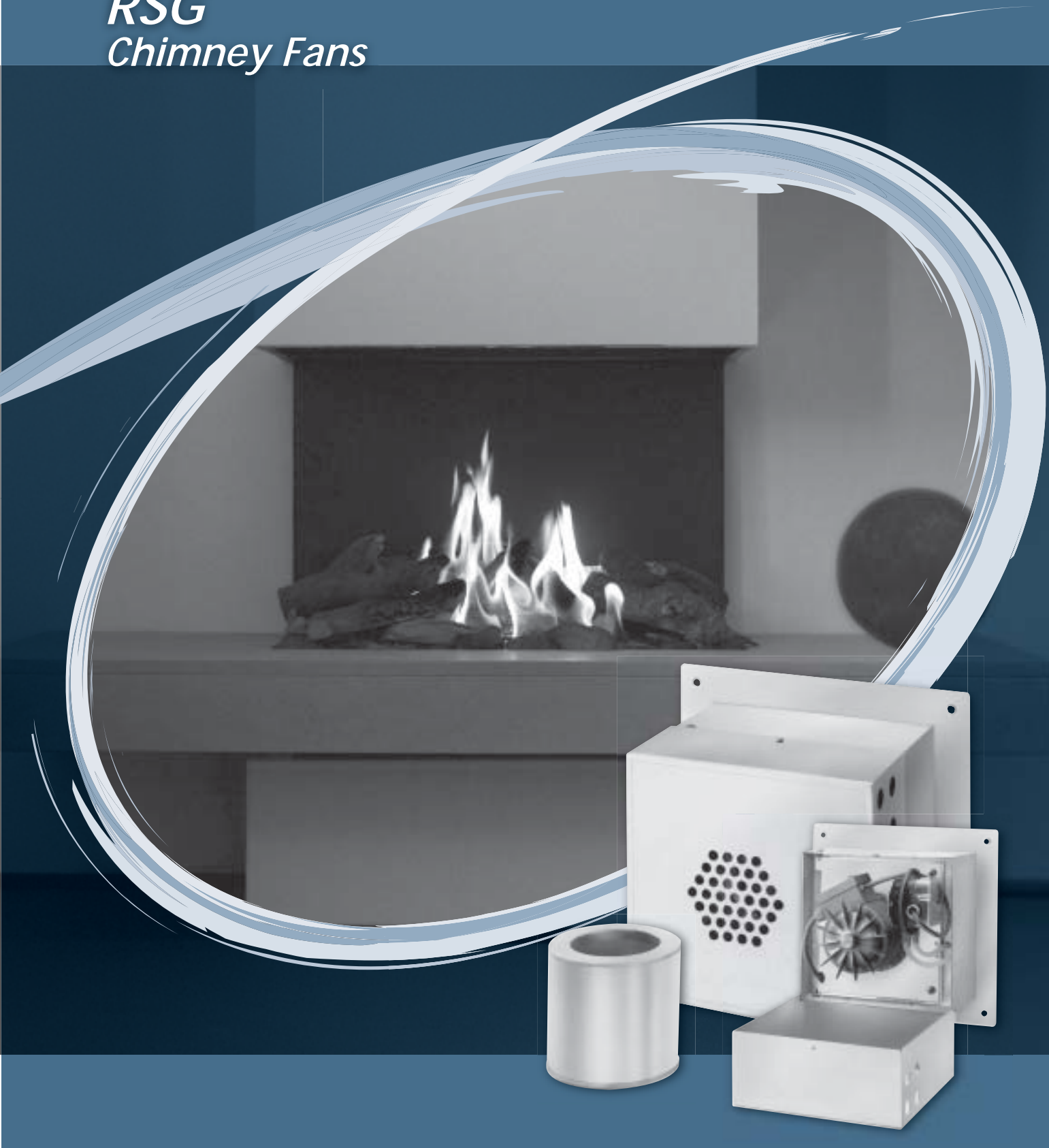


RSG Chimney Fans



EXHAUSTO

FOR A BETTER FLOW



RSG - Product Information

Description

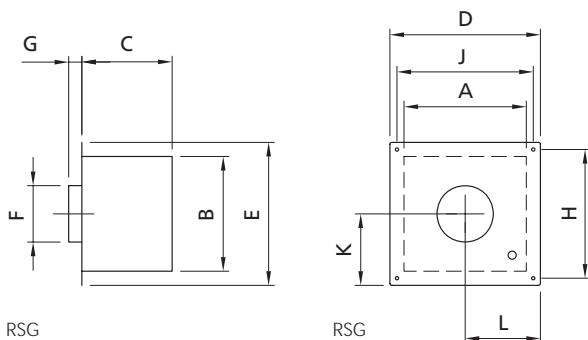
EXHAUSTO chimney fans RSG provide a controllable negative pressure along the full length of the flue and chimney. A fail-safe system is fitted in the fan which automatically measures the velocity of the flue gases. Only when the velocity exceeds the preset and safe level can the gas appliance be used. The fail-safe system prevents any spillage from the gas appliance as well as any leaks of CO and other poisonous gases. Fan type RSG is installed on the external wall and thereby enables a gas appliance to be installed in a room with no chimney. The power of the fan will allow for long horizontal flues up to 15 m. A silencer type SLR is available as an accessory for the fan type RSG. The fans are specially made to work in a hot and dirty environment and can withstand temperatures up to 180 °C at the flue exit or chimney top.

Construction

The fans are made from galvanised sheet metal, fitted with a centrifugal impeller that is very resistant to dirt in the flue gases. The fans are fitted with an entirely closed, asynchronous motor with ball bearings sealed for life. The motor is specifically constructed to provide reliable operation at a high temperature. It is made to international classifications IP54 (protection class) and F (insulation). The motor is located inside the motor housing and thus separated from the flue gases. The electrical connection is provided by a heat resistant silicone cable withstanding 200 °C. The ranges offer fan capacities from 60 m³/h to 600 m³/h. EXHAUSTO chimney fans are offered with a unique money-back guarantee: should the fan not give you full satisfaction within 30 days of installation, irrespectively, you may return the fan for a full refund of the purchase price provided an appraisal form has been completed, and submitted with your order.

EXHAUSTO chimney fans are supplied with a 30 days money-back guarantee.

RSG - Specifications

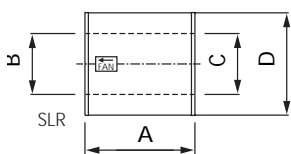


Model	RPM	1x230V Amp/kW*	Weight kgs
RSG125-4-1	1400	0.3/0.04	11
RSG150-4-1	1400	0.2/0.05	14
RSG200-4-1	1400	0.4/0.11	20

*effect

Model	A	B	C	D	E	F OUTSIDE	G	H	J	K	L
RSG125-4-1	265	250	220	336	320	ø121	35	280	296	153	157
RSG150-4-1	325	310	240	400	380	ø146	35	340	360	181	186
RSG200-4-1	405	380	275	478	453	ø196	35	413	438	215	221

SLR - Specifications



Type	A	B INSIDE	C INSIDE	D
SLR125-280	280	ø125	ø128	ø240
SLR150-280	280	ø150	ø153	ø265
SLR200-280	280	ø203	ø206	ø318
SLR200-600	600	ø203	ø206	ø318

Sound levels

Soundpower levels to flue pipe. Measured in accordance to ISO 5136

Model	Lw (dB)							Lp dB (A)
	125 Hz	250 Hz	500 Hz	1000 Hz	2000 Hz	4000 Hz	8000 Hz	
RSG125	60	59	56	50	49	42	34	49
RSG150	61	66	61	56	53	47	40	55
RSG200	69	72	68	62	59	55	49	61

Soundpower levels to external surroundings. Measured in accordance to ISO 3744

Model	Lw (dB)							Lw dB (A)	Lp dB (A)
	125 Hz	250 Hz	500 Hz	1000 Hz	2000 Hz	4000 Hz	8000 Hz		
RSG125-4-1	66	59	48	44	40	30	21	54	29
RSG150-4-1	75	67	52	50	44	36	29	61	35
RSG200-4-1	80	69	59	56	51	45	36	66	41

Sound levels to external surroundings

Tolerance +/-3 db

Lw = Sound effect level dB. (reference: 1 pW)

Lp = Sound Pressure level dB (A) at a distance of 1 m from the fan at halfspheric sound distribution. Lp (2 metres) = Lp (1 metre) - 6 dB.

Sound absorbed using silencer SLR (Lw to flue pipe)

Model	Lw (dB)						
	125 Hz	250 Hz	500 Hz	1000 Hz	2000 Hz	4000 Hz	8000 Hz
SLR125-280	4	6	11	21	18	12	12
SLR150-280	2	4	11	19	14	14	9
SLR200-280	1	2	10	16	12	12	7

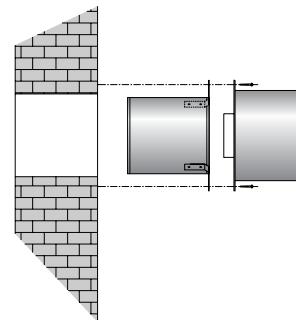
RSG - Installation

Chimney fan RSG is located on the external wall.

The installation instructions give detailed information regarding adjustment of the length of the silencer to accommodate different site conditions.

Cut a hole through the wall providing minimum 5 mm clearance between the wall and the silencer or the insulated flue.

Installations below 2.7 m. from the ground should have a suitable guard as the chimneyfan can get hot.

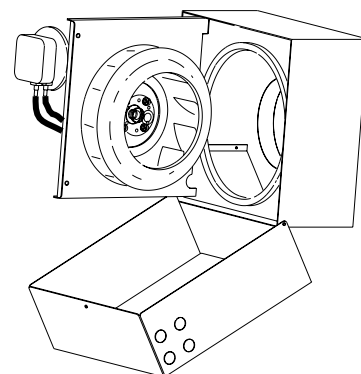


RSG - Fail-safe system

The fans have a built-in fail-safe system consisting of a pressure differential switch and a flow measuring system.

The fail-safe system complies with BS5440: 1990 and BS6644:1991.

The chimney fan should always operate whenever the heating appliance is used.



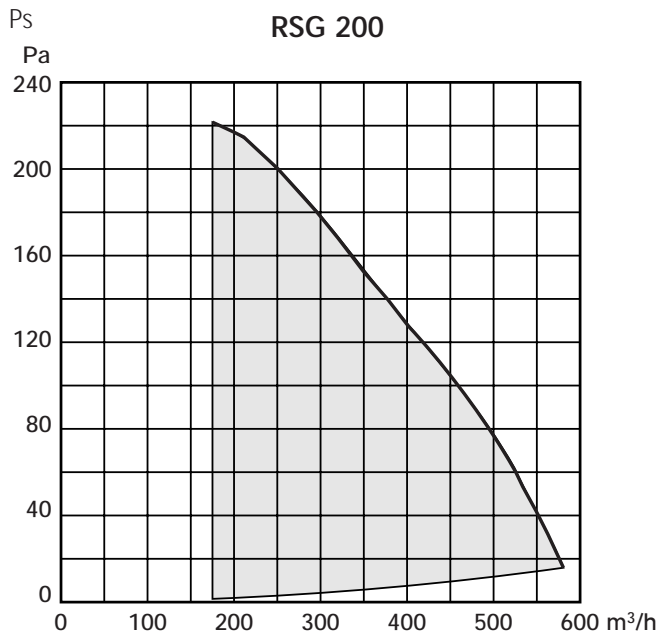
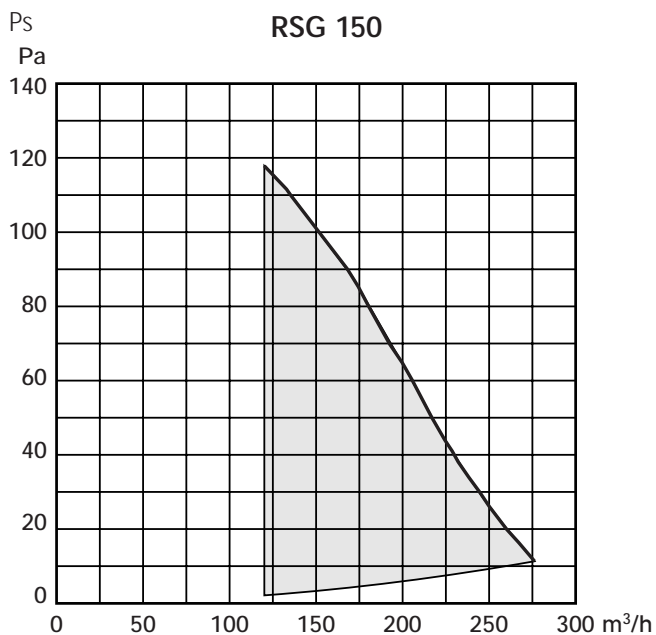
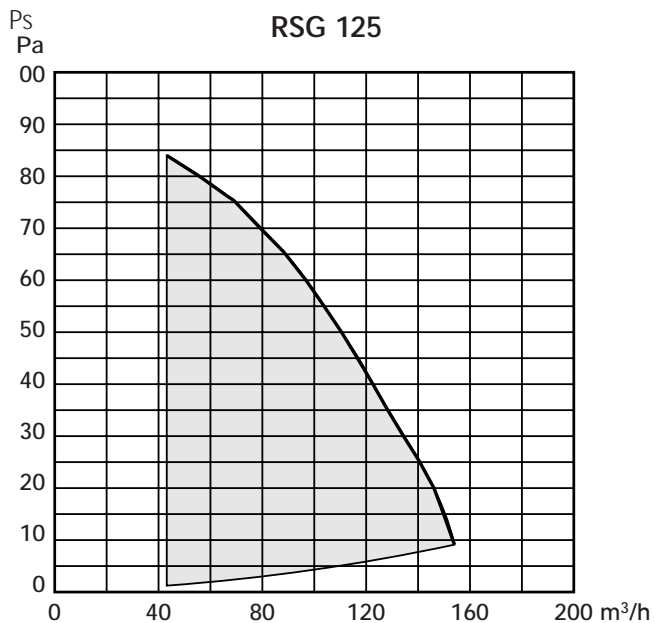
RSG - Chimney fan selection

Please use the EXHAUSTO fan selection chart or complete an appraisal form.

EXHAUSTO offers a free fan selection service.

The correct chimney fan and control unit are calculated according to EN 13384.

RSG - Capacity charts



The capacity charts are measured at a flue gas temperature of 20 °C. The fan capacity changes with temperature of the flue gases. Correction of system pressure loss for flue gas temperature higher than 20°C is calculated:

$$Ps, 20 = Ps, t \times \frac{273 + t (°C)}{293}$$

Example

System demand: 500m³/h and 90 Pa at 180°C

Chimney fan selection: 500m³/h and 139 Pa at 20°C

EXHAUSTO Chimney Fans are supplied with a 2 year warranty. EXHAUSTO is certified according to ISO 9001

EXHAUSTO Ltd.

Unit 3, Lancaster Court
Coronation Road
Cressex Business Park
GB-High Wycombe - HP12 3TD

Tel. 01494 465166
Fax 01494 465163
info@exhausto.co.uk
www.exhausto.co.uk

EXHAUSTO

FOR A BETTER FLOW

